

Sophie Theodose

LUXE & PARCHEMIN

PORTFOLIO
2025

Workshop

Sophie Theodose

LUXE & PARCHEMIN

Sophie Théodose, contemporary spirit of parchment

Gold and pigment work for wall décor, lighting, and decorative objects crafted in parchment.

In her unique and bespoke creations, Sophie Théodose blends ancestral craftsmanship, excellence, and contemporary design.

Sophie Théodose began training in the technique of illumination on parchment in 2005.

Gradually, she freed herself from the traditional approach to create pieces that closely blend contemporary vision and medieval inspiration.

She became a member of the Ateliers d'Art de France in 2009 and opened her workshop in Saint-Germain-en-Laye in 2013.

Sophie Théodose was noticed by the Remy Cointreau and Michelangelo Foundations and has been listed in the Homo Faber Guide since 2020.

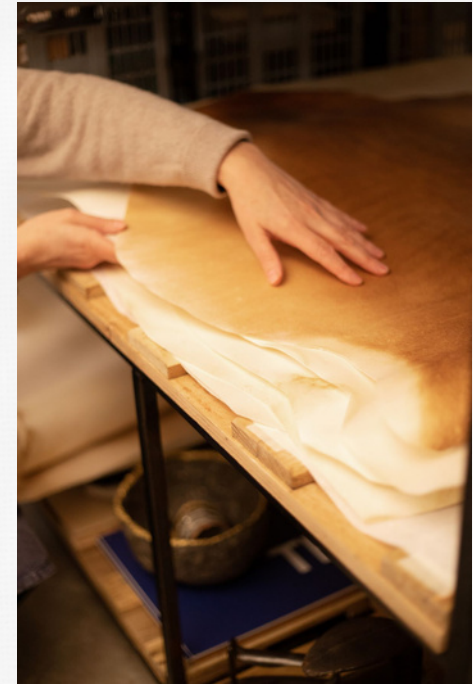


Know-how

Sophie Theodose

LUXE & PARCHEMIN

Parchment

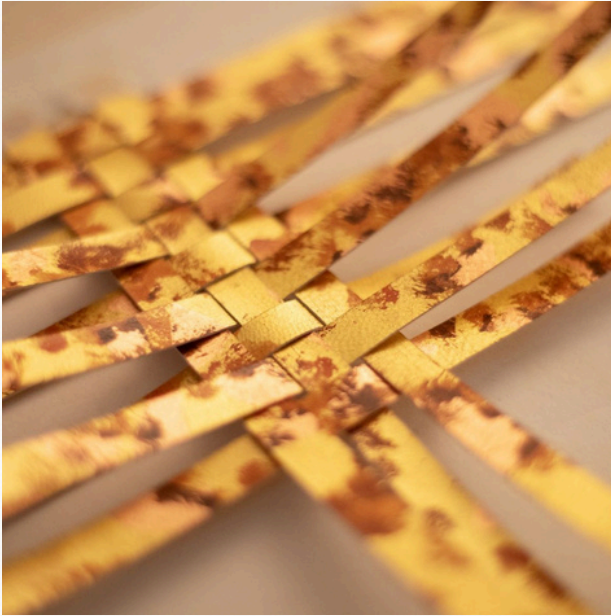


A traditional material of illuminators, parchment imposes its own character on the artwork: its natural tones and irregularities, the movement of the skin with ambient humidity — all contribute to making each piece truly unique.

Parchment comes from the agri-food industry. Once considered a mere byproduct destined for waste, it is now revalorized and elevated into a luxurious material.

Sophie Théodose works with goat, kid, lamb, and calf parchments sourced from renowned French parchment makers.

Illumination



Gold & Copper



Far from being just a color, gold reigns supreme, outshining all others with its radiant brilliance.

Timeless and luminous, gold has been attributed divine qualities for millennia. It is one of the few precious materials that retains all of its properties without the slightest alteration — even after being recycled... endlessly.

There are many techniques for working with gold: mercury gilding, gold ink, oil- or water-based leaf gilding...

Sophie Théodose works with genuine gold leaf, enhancing its brilliance by burnishing it with an agate stone.

Illumination



Pigments



Nature overflows with color — the sky, the earth, water and fire are living proof.

Finding materials — mineral, vegetal, or animal — capable of expressing this richness is a challenge that is constantly embraced. Their very names are a journey in themselves: lapis lazuli or azurite blues, Prussian blue, chrome oxide green, Mars yellow, Brazilwood red, Venetian red, and blacks made from peach or smoke...

Sophie Théodose makes it a point of honor to source her pigments exclusively from French color manufacturers. In close connection with these natural pigments, she also works with extra-fine gouaches — the only ones still prepared primarily with gum arabic.

Collections Projects

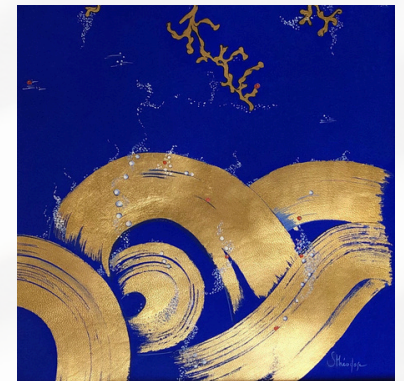
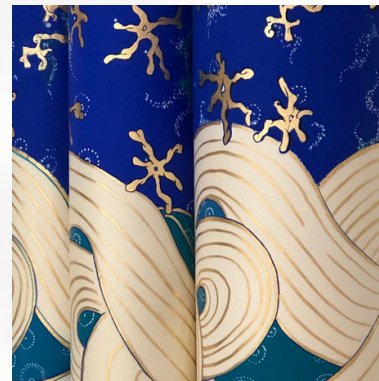
Sophie Theodose

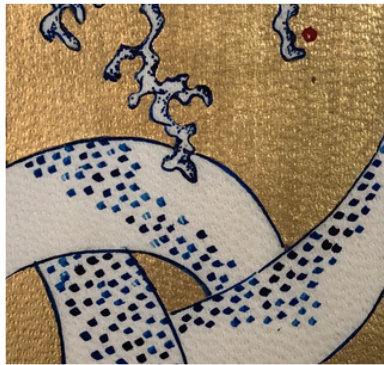
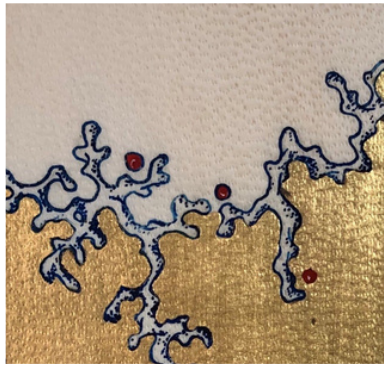
LUXE & PARCHEMIN

ENTRELACS

Mouvement guides the entire ENTRELACS collection:

Inspired by water, this collection focuses on the flexibility of parchment and the intense dialogue between gold and deep blue pigments





AU DESSUS DE L'ÉTANG

ABOVE THE POND

Spring comes to an end, summer might even have begun.

Softly, flower petals drift and scatter across the surface of the pond.

Here and there, the sun plays hide and seek, weaving together patches of shadow and light.

Goat parchment, inks, extra-fine gouache, and yellow, white, and champagne gold leaf come together in this piece, with its delicately cut edges that, thanks to the parchment's flexibility, reveal the gilded design beneath.

Wall panel – 150 cm x 90 cm





TOUT VA BIEN SE PASSER

IT'S GONNA BE ALLRIGHT

Summer is here, the sun is shining, and the atmosphere
is calm.

The water sparkles, offering us a divinely refreshing
caress.

Goat parchment, edge-to-edge cut, accents of sand
finished with gold leaf.

Wall panel – 120 cm x 80 cm





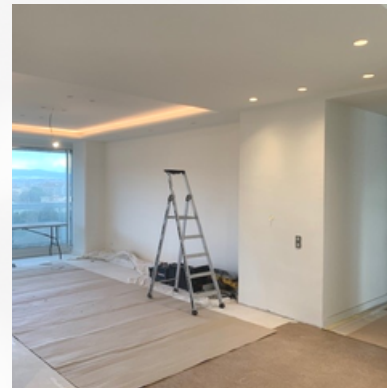
ZEN MARSEILLE



Several wall panels to decorate the dining room, the music room, and the living room.

Details: intricate marquetry combining various shades of parchment and multiple tones of gold leaf.

Dimensions: 150 x 92 cm / panel





Shodō

JARDINS DE CUIVRE

COPPER GARDEN

Branch motif

Oxidized rose copper leaves

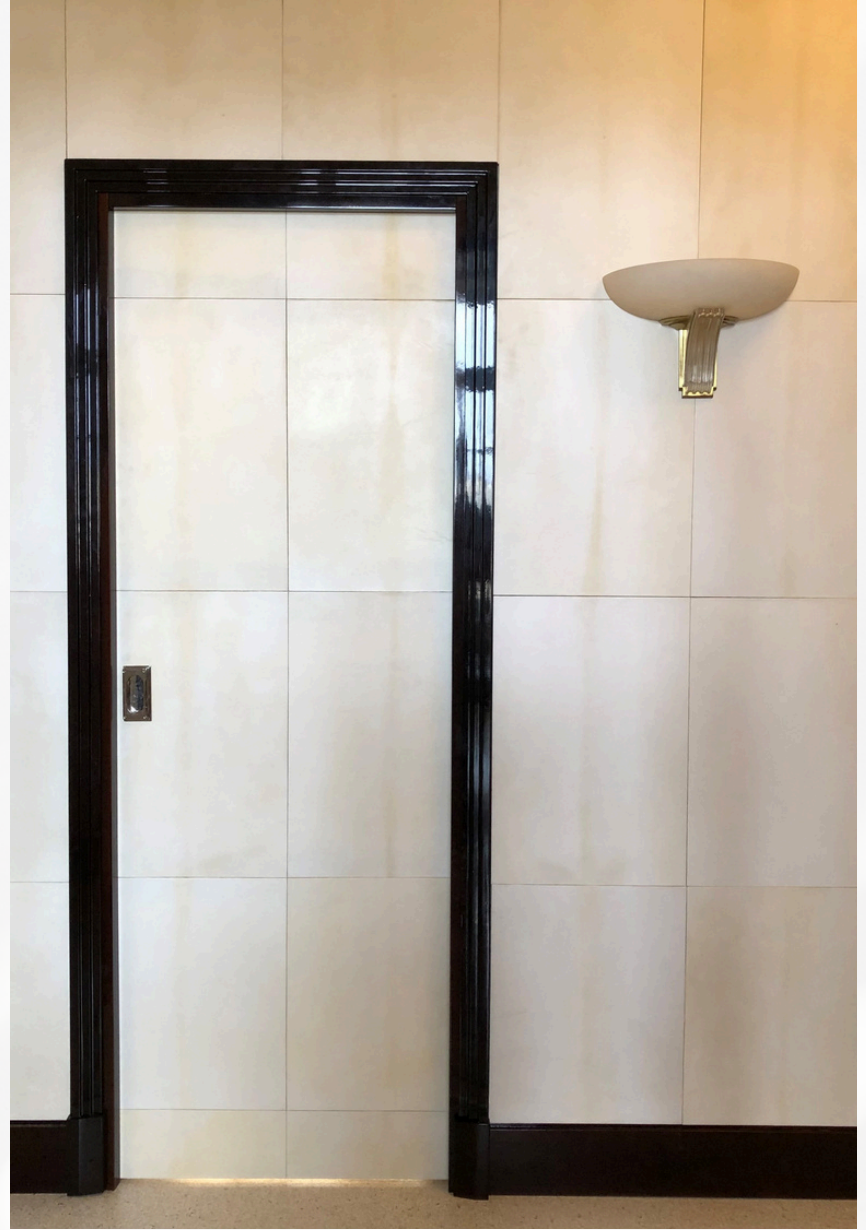




ART DECO ENTRANCE HALL

In an Art Deco Parisian building
close to Les Invalides,
cladding and layout of the entire entrance —
a total of 25 m² of parchment.



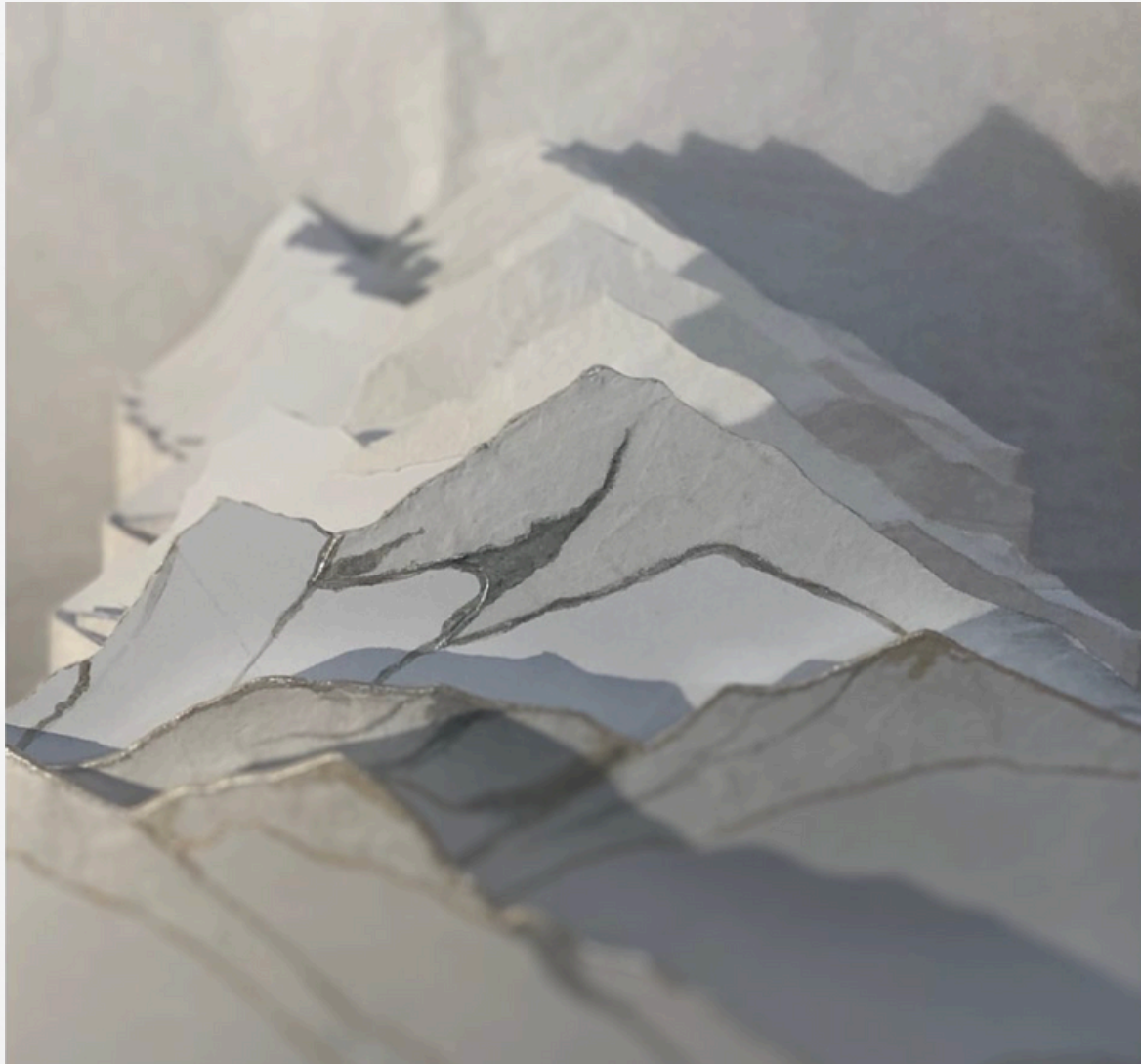


MENU SARKARA



Cards designed as an introduction to the culinary experience of two-Michelin-starred chef Sébastien Vauxion at #Sarkara



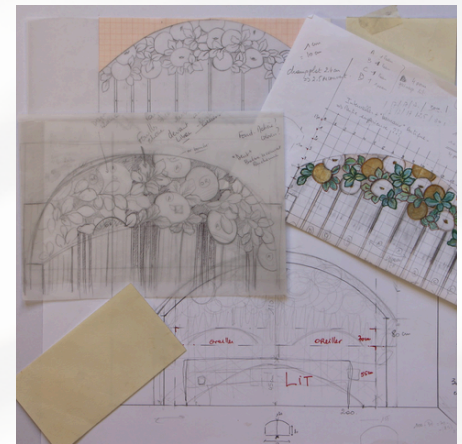


LE POUVOIR DES FLEURS

Headboard "Flower Power"
Wood, parchment, gold leaf, and extra-fine
gouaches

Parchment cladding on birch wood.
Three-dimensional fruit elements in white
parchment and gold leaf on gesso.
65 hand-painted leaves in parchment and
Amate paper, gilded with gold leaf and extra-
fine gouaches.

Dimensions: 200 cm wide × 150 cm high





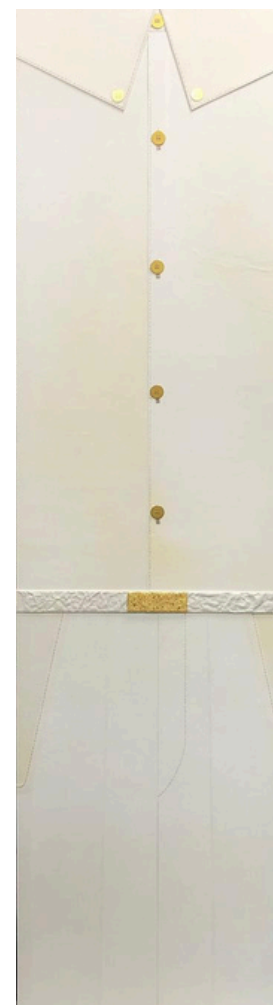
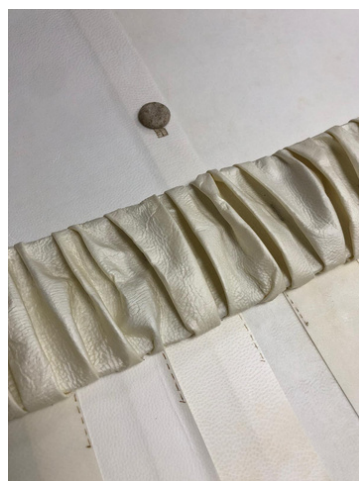
Sophie Théodose
LUXE & PARCHEMIN

"Blooming Pompadour"
Room divider in bronze metalwork by Maison Rennotte and parchment
with illumination by Sophie Théodose

DEPUIS 1860

RENNOTTE
BRONZIER D'ART





Juliette & Oh James !
 Panneaux décoratifs en parchemin et feuille d'or pour le Spa 2035
 designé par Sandrine Sarah Faivre pour les Places d'or 2025

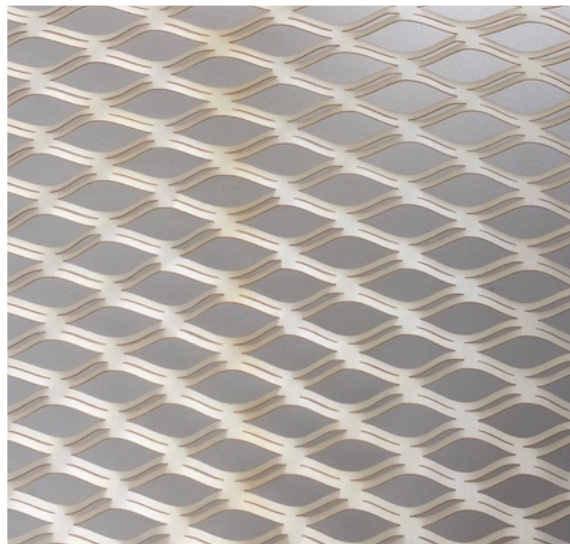


SAMPLES

Sophie Theodose

LUXE & PARCHEMIN

CUT OUT



Parchment can be worked in countless ways:
woven, embossed, laser-cut or hand-cut, painted, gilded, or even backlit —
this material reveals both its translucent and opaque facets.

Price per m² starting at €1200 excl. VAT

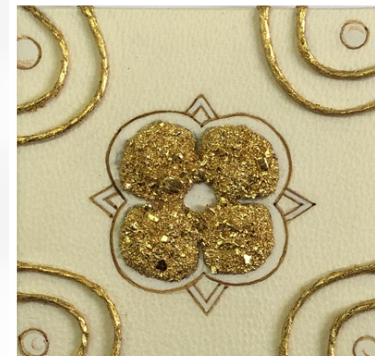
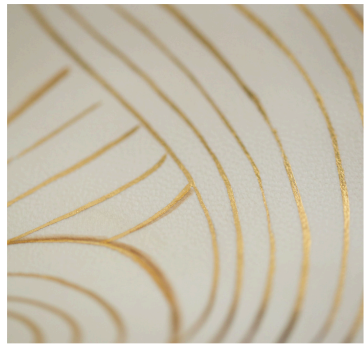
VOLUME



Parchment can be crafted in countless ways:
woven, embossed, laser-cut or hand-cut, painted, gilded, or even backlit —
this material reveals both its translucent and opaque facets.

Price per m² starting at €1200 excl. VAT

PARCHMENT & GOLD



Illuminating parchment

A refined design that sends out nothing but good vibes... made of parchment!

Price per m² starting at €1500 excl. VAT

NEW : OSTRICH PARCHMENT



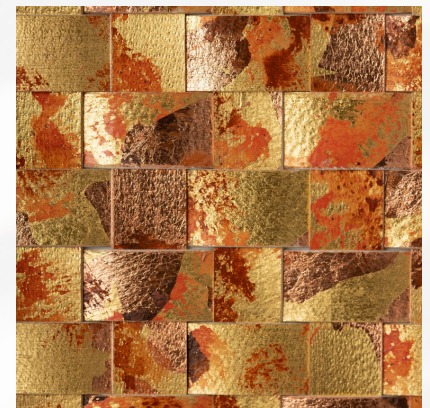
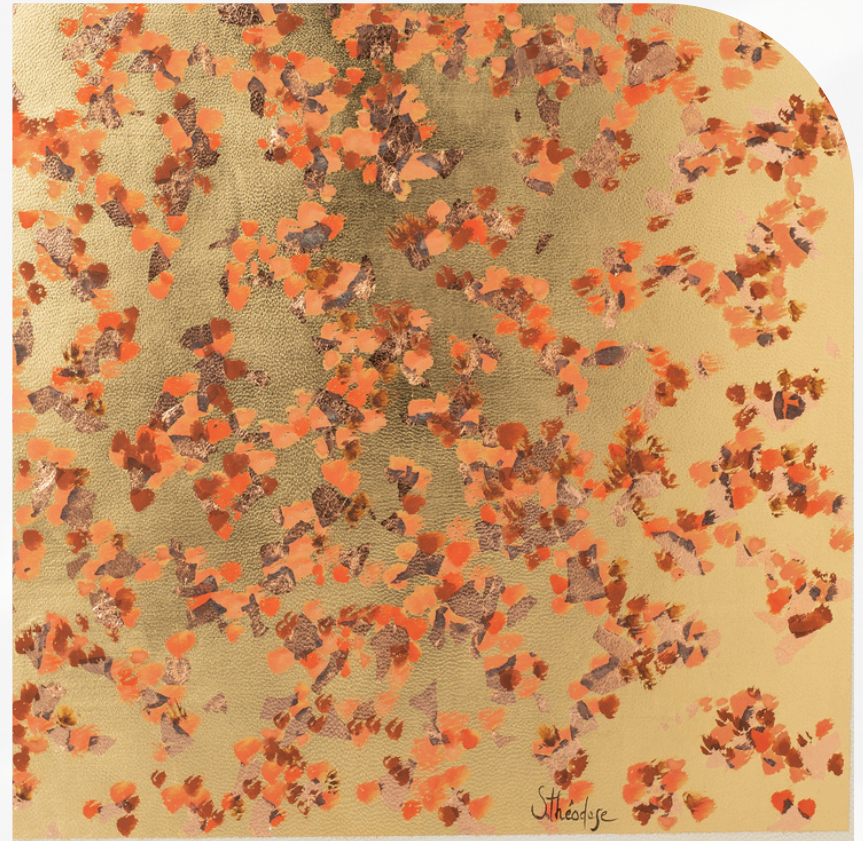
Tainted and Illuminated OSTRICH parchment
Price per m² starting at €2100 excl. VAT

NOUVEAUTÉ ! MORDORÉ

MORDORÉ is a brand-new creation — a blend of rose copper and gold leaf, enriched with pigments.

A romantic touch to adorn alcoves, door panels,
office interiors...

Price per m² starting at €1500 excl. VAT

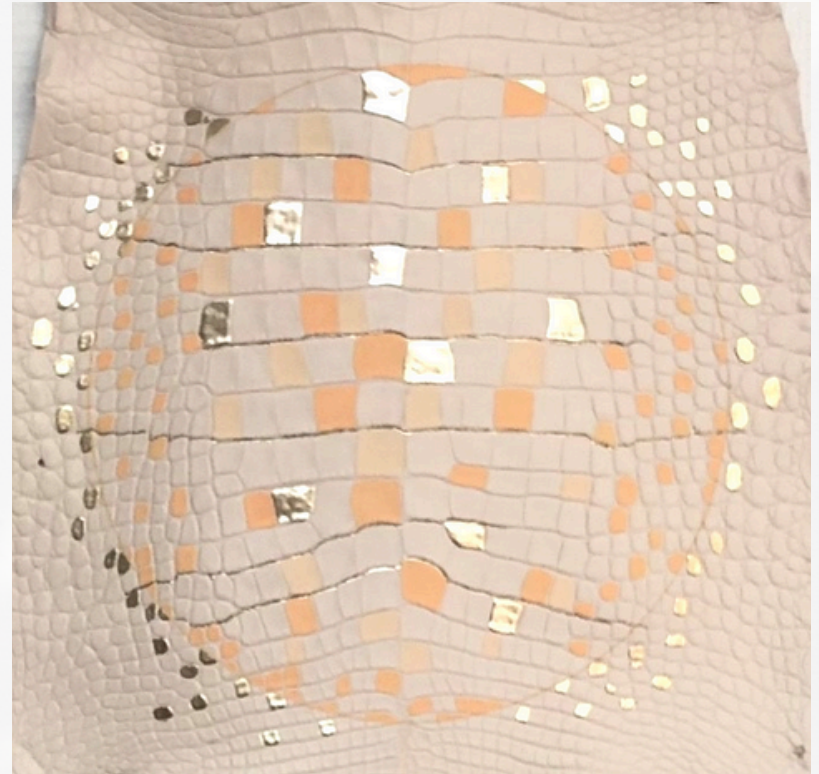


NEW SKIN I

LVMH Métiers d'Art :
bridging tradition and innovation

Decorative work on an alligator hide,
for Louis Vuitton.
A tone-on-tone gradient, crafted scale by scale.

Price on demand



NEW SKIN II

LVMH Métiers d'Art :
bridging tradition and innovation

Decorative work on an alligator hide,
for LVMH Métiers d'art.
Wheat ears in sand and gold.

Price on demand



CONTACT

sth@sophiethedose.fr

+33 (0)6 09 89 33 22

Instagram :
sophie_theodose_enlumineur

LinkedIn
Sophie Théodose

PHOTOS CREDITS

Cedric Corroy,
Marion Saupin,
KS Photographies,
Marc-Antoine Mouterde,
Nicolas Verselino,
Victor Robert.

